

# Production Functionality

The Production functionality is activated by selecting the 'Activate Production' option under the Admin / Defaults / Manage Job Defaults / Preferences screen.

## The Production Process for Kitsets set to be 'When Received into Stock'.

### Internal Build

The simplest way to use the process is to add the items needing to be made to a Job for an Internal customer account.

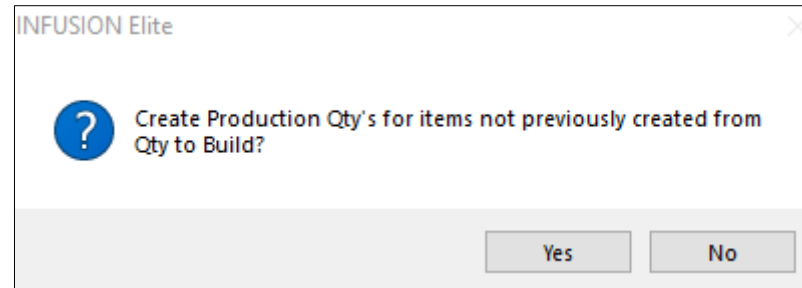
Enter the Quantity to be Built in the Qty to Build column.

Remove the Default 1 value form the Quantity (sold) column.

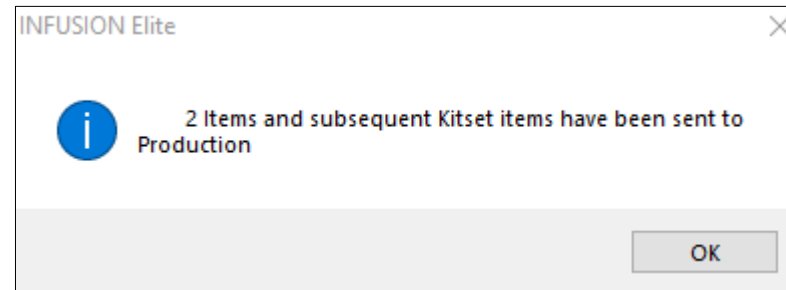
The Quantity Required column (QTY Reqd) can also be entered but is not mandatory

Qty Reqd	Qty Prev. Built	Qty to Build	Qty Built	Quantity	Cost (Excl GST)	Sell Rate
		5.00			42.00	76.00
		8.00			11.00	19.50

The items required for the Production can be passed through to the Bill of Materials (BOM) table by using the Production Button.



A confirmation screen will display how many items have been sent to Production



NB – issue noted: if the user uses the Production button, but doesn't save the job – the software will flag the Job Lines as having been sent to Production but will not create the Bill of Material BOM table records. Subsequent use of the Production button will not send the items to the BOM table.

When the items have been sent to Production, a tailored Jobcard can be created and given to the production department for manufacture.

The Production screen will display the products that are required for the Production process

Staff		Resources		Products	
Job Id	Description	Qty	Code	Item #	
10144	x1 component	20.0000	JVPX1	1	
10144	x2 component	40.0000	JVPX2	1	
10144	Y1 Component	24.0000	JVPY1	2	
10144	Y2 Component	40.0000	JVPY2	2	

The component products to be used in the Production will also display on the Bill of Materials Details Report.

# Bill of Materials Detail

## The Demonstration Company Ltd

Printed :

21/01/2021 12:31:41 PM

Printed By :

Default Staff

Page :

1

Job Id	Product Code	Description	Qty
Products			
10144	JVPX1	x1 component	20.00
			20.00
	JVPX2	x2 component	40.00
			40.00
	JVPY1	Y1 Component	24.00
		24.00	
	JVPY2	Y2 Component	40.00
			40.00

Additional items can be added to the Quote, assigned to the same Job and also sent to Production. They will appear on the Bill of Materials Detail Report also.

Date	Code	Description	Qty Reqd	Qty Prev. Built	Qty to Build	Qty Built	Quantity	Cost (Excl GST)	Sell Rate
21/01/2021	KITSET	Kiset - jvp	10.00		10.00			42.00	76.00
21/01/2021	KITSET2	Kiset 2- jvp	8.00		8.00			11.00	19.50
21/01/2021	KITSET	Kiset - jvp	2.00		2.00			42.00	76.00
21/01/2021									

Staff		Resources		Products	
Job Id	Description	Qty	Code	Item #	
10144	x1 component	20.0000	JVPX1	1	
10144	x2 component	40.0000	JVPX2	1	
10144	Y1 Component	24.0000	JVPY1	2	
10144	Y2 Component	40.0000	JVPY2	2	
10144	x1 component	4.0000	JVPX1	1	
10144	x2 component	8.0000	JVPX2	1	

## Bill of Materials Detail

### The Demonstration Company Ltd

Printed : 21/01/2021 12:34:17 PM  
 Printed By : Default Staff  
 Page : 1

Job Id	Product Code	Description	Qty	
Products				
10144	JVPX1	x1 component	20.00	
			4.00	24.00
	JVPX2	x2 component	40.00	
			8.00	48.00
	JVPY1	Y1 Component	24.00	24.00
	JVPY2	Y2 Component	40.00	40.00

When the items have been manufactured, the Qty Built value is updated on the Job screen, either by double clicking in this field or by entering the quantity manually if the value is different.

Date	Code	Description	Qty Reqd	Qty Prev. Built	Qty to Build	Qty Built
21/01/2021	KITSET	Kiset - jvp	10.00		10.00	10.00
21/01/2021	KITSET2	Kiset 2- jvp	8.00		8.00	8.00
21/01/2021	KITSET	Kiset - jvp	2.00		2.00	2.00
21/01/2021	KITSET	Kiset - jvp	4.00		2.00	2.00
21/01/2021						




  

Date	Code	Description	Qty Reqd	Qty Prev. Built	Qty to Build	Qty Built
18/01/2021	KIT WHEN REC	Kitset when Received			7.00	7.00

To add the items into Stock, select the 'Add Built Items to Stock' button at the bottom of the screen.

<b>Freight</b>	0.00
<b>GST Exclusive</b>	0.00
<b>GST</b>	0.00
<b>Rounding</b>	0.00
<b>GST Inclusive</b>	0.00
(Unbilled and Authorised Costs Only)	
<b>Deposit Received</b>	0.00

 Add Built Items to stock
  Preview
  Invoice Now

This will display:

Add Built Items to Stock

Code	Description	Qty Prev.Built	Qty Built - Add to Stock
KITSET	Kiset - jvp	0.00	10.00
KITSET2	Kiset 2- jvp	0.00	8.00
KITSET	Kiset - jvp	0.00	2.00
KITSET	Kiset - jvp	0.00	2.00

OK
 Don't Add to Stock

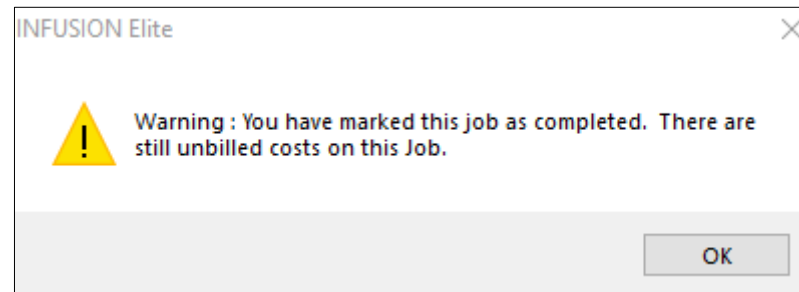
Selecting OK will update the stock on hand figures for the item(s) and populate the 'Qty Prev. Built' value on the Manage Job screen

Date	Code	Description	Qty Reqd	Qty Prev. Built
21/01/2021	KITSET	Kiset - jvp		10.00
21/01/2021	KITSET2	Kiset 2- jvp		8.00
21/01/2021	KITSET	Kiset - jvp		2.00
21/01/2021	KITSET	Kiset - jvp		2.00

If the job was solely a Production job, it can then be marked as “Completed”.

Issues noted during testing:

Currently, a warning is issued that the job has unbilled costs on it.



The Work in progress (WIP) reports will include these lines with zero value.  
These issues will need to be resolved in the future.

### **Production Build Required for Customer Order**

A quote can be generated for a specific Customer order that requires items to be Produced.

Code	Description	Qty	Rate
KITSET	Kiset - jvp	2.00	76.00
KITSET2	Kiset 2- jvp	3.00	19.50

When the quote is accepted, the quote will be assigned to a new job and the lines that are to be built can be assigned to the job using the 'Assign Quoted' option.

This will prompt with the following screen which allows a quantity to be added to the Job to be built.



Select / Enter Quantities to Assign to Job

☐ Sell All
☒ Build All

Code	Description	Qty	Rate	Qty to Sell	Previous Sell	Qty to Build	Previous Build
[KITSET]	Kiset - jvp	2.00	76.00	0.00	0.00	2.00	0.00
[KITSET2]	Kiset 2- jvp	3.00	19.50	0.00	0.00	3.00	0.00

The job will now display the item(s) to be built.

Date	Code	Description	Qty Reqd	Qty Prev. Built	Qty to Build	Qty Built
21/01/2021	KITSET	Kiset - jvp	2.00		2.00	
21/01/2021	KITSET2	Kiset 2- jvp	3.00		3.00	

Again, the Production button can be used to transfer the required kitset products to the Production screen and the Bill of Materials Report.



If new Items are added to the Quote or quantities on an existing Quote line are increased, these can be assigned to the Job and sent through to Production, using the same process.

Code	Description	Qty	Rate
KITSET	Kiset - jvp	3.00	76.00
KITSET2	Kiset 2- jvp	3.00	19.50
KITSET	Kiset - jvp	1.00	76.00


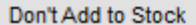
Code	Description	Qty Reqd	Qty Prev. Built	Qty to Build
KITSET	Kiset - jvp	2.00		2.00
KITSET2	Kiset 2- jvp	3.00		3.00
KITSET	Kiset - jvp	3.00		1.00
KITSET	Kiset - jvp	1.00		1.00

Staff		Resources		Products	
Job Id	Description	Qty	Code	Item #	
0146	x1 component	4.0000	JVPX1	1	
0146	x2 component	8.0000	JVPX2	1	
0146	Y1 Component	9.0000	JVPY1	2	
0146	Y2 Component	15.0000	JVPY2	2	
0146	x1 component	2.0000	JVPX1	3	
0146	x2 component	4.0000	JVPX2	3	
0146	x1 component	2.0000	JVPX1	1	
0146	x2 component	4.0000	JVPX2	1	

When the items are built, the user will populate the Qty Built column and add the Built Items to Stock. This will remove the kitset compoents from Stock and add the Kitset parent (When Received) into stock.

 Add Built Items to Stock 

Code	Description	Qty Prev.Built	Qty Built - Add to Stock
KITSET	Kiset - jvp		2.00
KITSET2	Kiset 2- jvp		3.00

 OK


The Items must now be sold to the customer, so that the kitset items are removed from stock.  
 Use the SellAll button on the Manage Jobs screen.  
 A prompt will come up asking for the Date for the Items to be Sold.

Delete Line	Insert Line	Production
Authorise None	Authorise All	<b>Sell All</b>
New P/Order	Assign Quoted	Job Label
Show Costs/Profit		
List Deposit Use		

**Date for Items ?**

22/01/2021

OK

This will redate the lines on the Job if it is different to the date the lines were assigned from the Quote.

Date	Code	Description	Qty Reqd	Qty Prev. Built
22/01/2021	KITSET	Kiset - jvp		2.00
22/01/2021	KITSET2	Kiset 2- jvp		3.00
21/01/2021				

The Job is ready to be invoiced, and the “Detail From” for the invoice will normally be “Quoted”.

**Job Management Invoice Detail Settings**

These settings will apply only to the current invoice. To change the default use the Job Defaults option under Admin / Settings.

Products	Full Detail	<input checked="" type="checkbox"/> Include Title
Cashbook	Full Detail	<input checked="" type="checkbox"/> Include Instructions
Suppliers	Full Detail	<input type="checkbox"/> Include Tech Notes
Staff	Full Detail	<input checked="" type="checkbox"/> Mark Job as Complete
Disbursements	Full Detail	<input type="checkbox"/> Use Job Charge To Details
Detail From	Quoted	Job has a Quote assigned

Preview