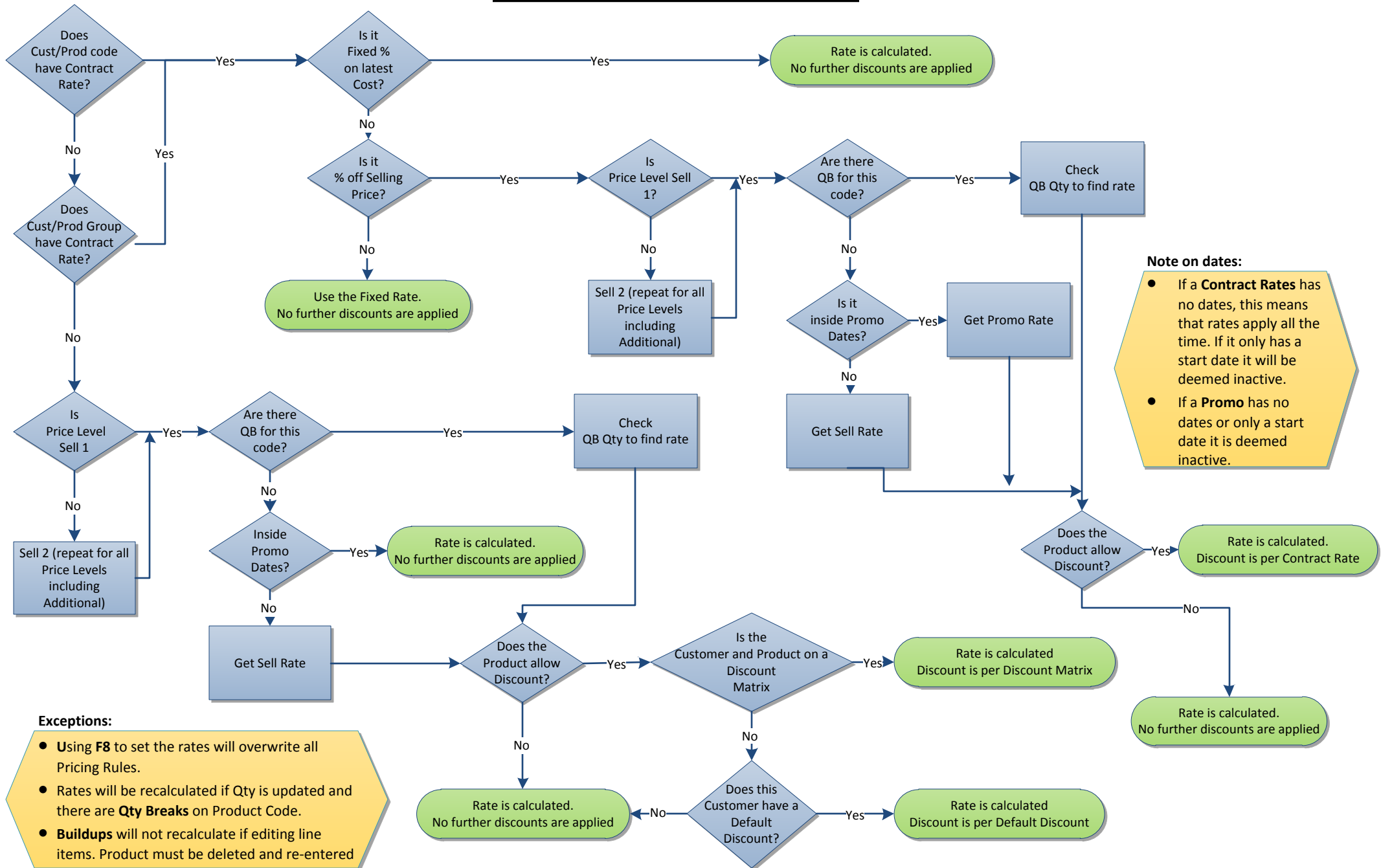


# Price Rules



**Note on dates:**

- If a **Contract Rates** has no dates, this means that rates apply all the time. If it only has a start date it will be deemed inactive.
- If a **Promo** has no dates or only a start date it is deemed inactive.

**Exceptions:**

- Using **F8** to set the rates will overwrite all Pricing Rules.
- Rates will be recalculated if Qty is updated and there are **Qty Breaks** on Product Code.
- **Buildups** will not recalculate if editing line items. Product must be deleted and re-entered